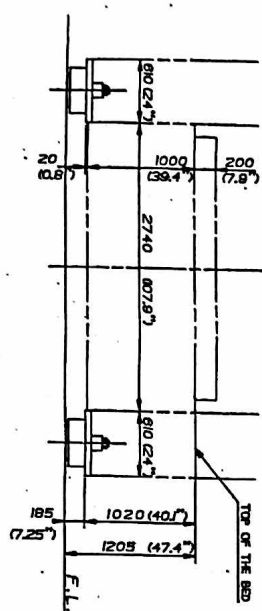
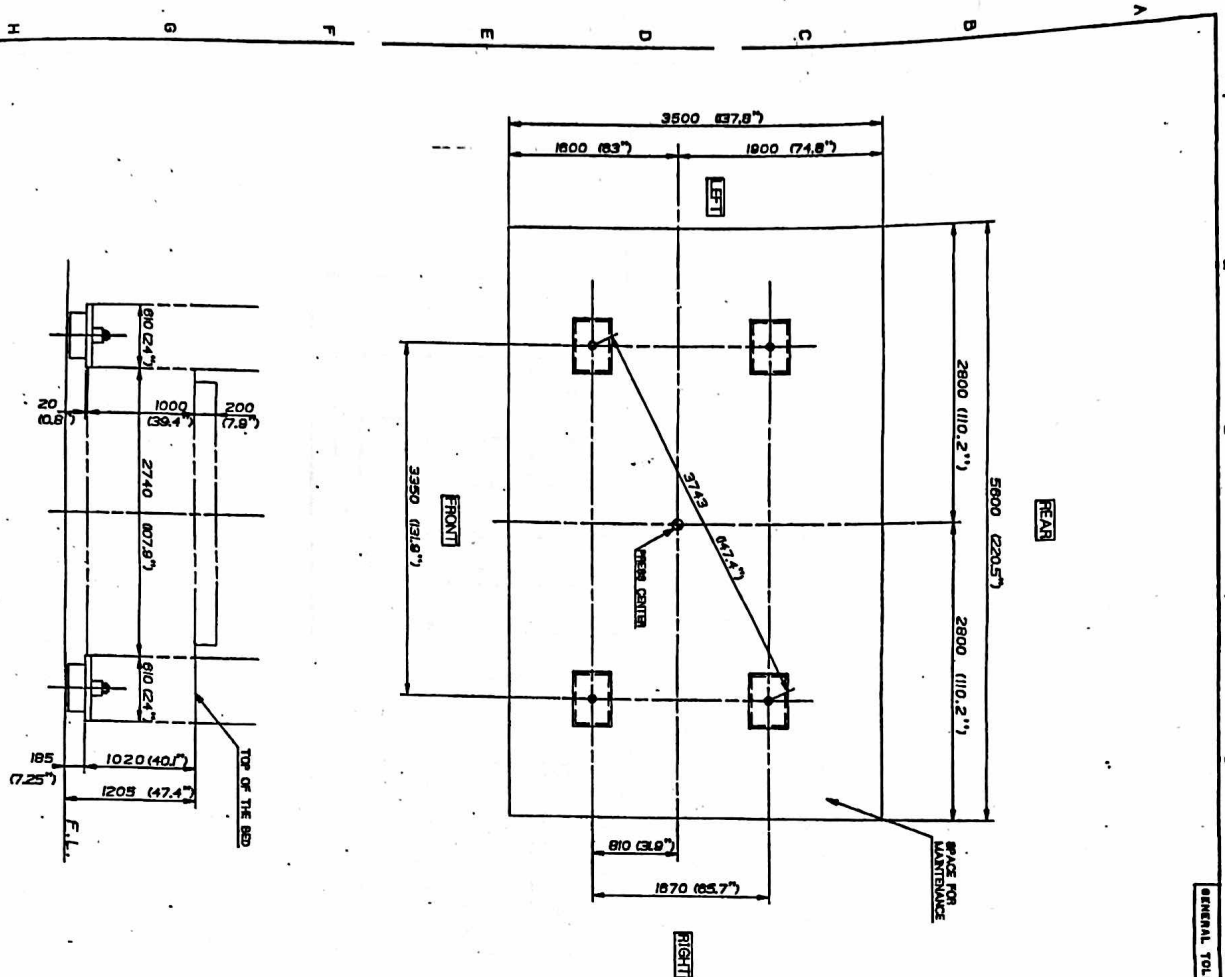


ALL DIMENSIONS ARE IN MILLIMETERS UNLESS OTHERWISE SPECIFIED.  
 DIMENSIONS ARE GIVEN TO THE CENTERLINE UNLESS OTHERWISE SPECIFIED.  
 DIMENSIONS ARE GIVEN TO THE SURFACE UNLESS OTHERWISE SPECIFIED.  
 DIMENSIONS ARE GIVEN TO THE CENTERLINE UNLESS OTHERWISE SPECIFIED.

A401-1

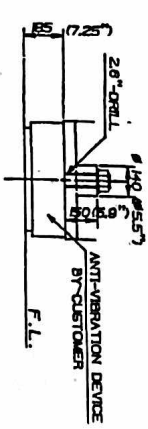
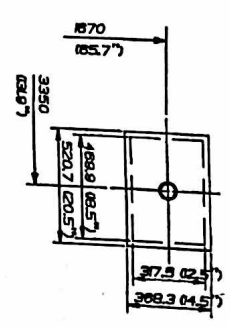
NO.	DESCRIPTION	UNIT	VALUE
1	MAXIMUM CAPACITY	KG	400
2	TOTAL POWER INPUT	W	1500
3	MAXIMUM SPEED	MIN	1500
4	MAXIMUM TORQUE	KG-CM	200
5	MAXIMUM CURRENT	AMP	10
6	MAXIMUM VOLTAGE	V	110
7	MAXIMUM TEMPERATURE	°C	50
8	MAXIMUM HUMIDITY	%	80
9	MAXIMUM ALTITUDE	M	1000
10	MAXIMUM WEIGHT	KG	100
11	MAXIMUM LENGTH	CM	100
12	MAXIMUM WIDTH	CM	100
13	MAXIMUM HEIGHT	CM	100



GENERAL TOLERANCE SHALL CONFORM TO REF 04082.0

Δx	Δx	Δx	Δx
Δx	Δx	Δx	Δx

4401-2



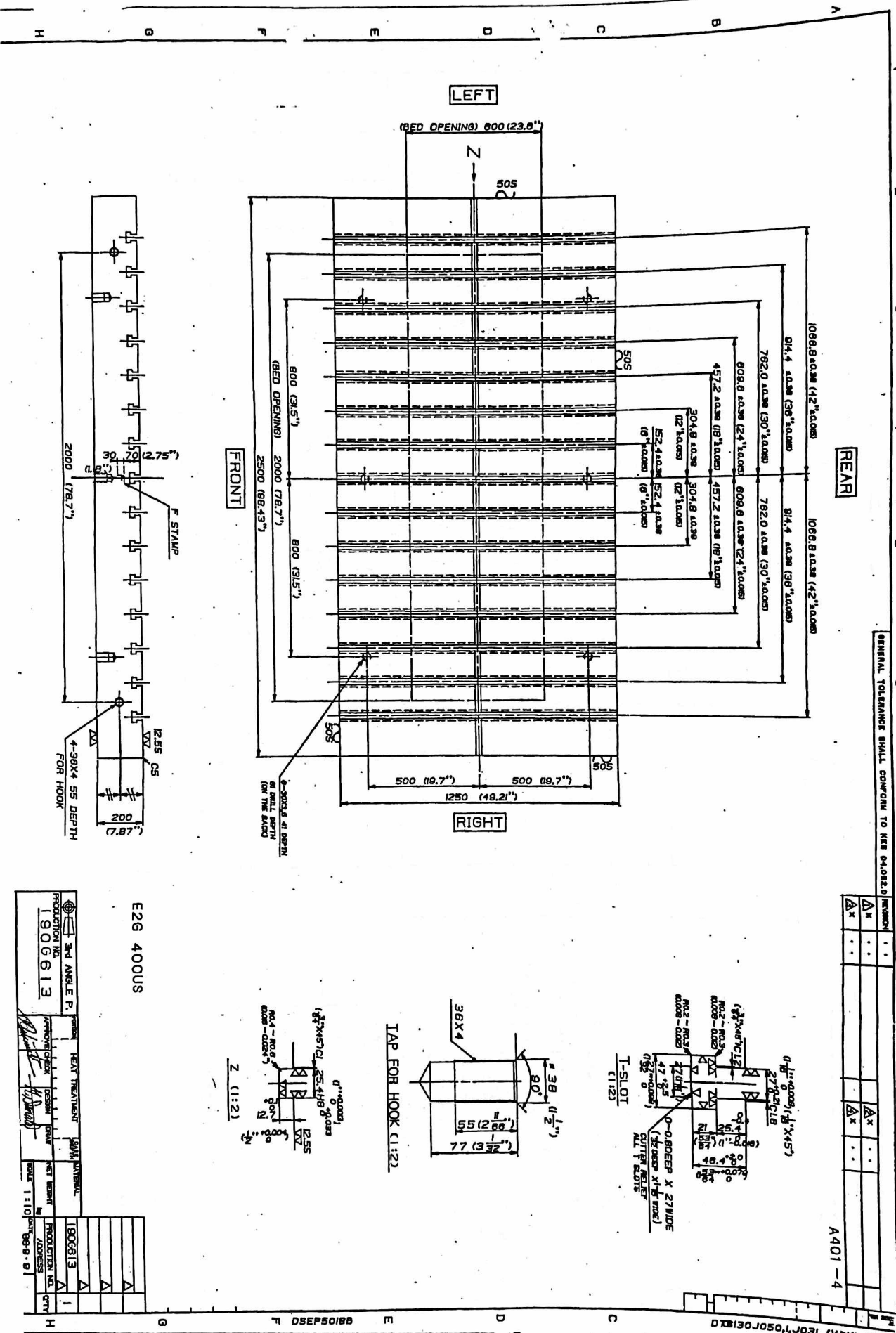
DETAILS OF INSTALLATION  
(1:15)

- NOTE
1. DESIGN, PROCUREMENT OF MATERIAL, AND WORKS OF THE FOUNDATION SHALL BE ACCOMPLISHED BY CUSTOMER.
  2. PIPING AND WIRING WORKS OUTSIDE THE MACHINE SHALL BE ACCOMPLISHED BY CUSTOMER.
  3. DIFFERENCE IN HEIGHT AMONG LEVEL PLATES SHOULD BE WITHIN 2MM, AND HORIZONTALITY OF A LEVEL PLATE SHOULD BE WITHIN 0.5MM(0.005mm) PER LENGTH OF 1000MM(39.37inch).
  4. EARTH CONNECTION UP TO THE CONTROL PANEL SHOULD BE ACCOMPLISHED BY CUSTOMER.
  5. ANTI-VIBRATION DEVICE OR ANCHOR BOLTS-LEVEL PLATES AND BASE PLATES SHALL BE ACCOMPLISHED BY CUSTOMER.
  6. WITHOUT ANTI-VIBRATION DEVICE THE FLOOR SHOULD BE ACCOMPLISHED FLATLY.
  7. WHEN DESIGNING THIS FOUNDATION, DYNAMIC FORCE (APPROX 60% OF THE MACHINE WEIGHT) SHOULD BE ADDED TO THE MACHINE WEIGHT.
  8. TOTAL WEIGHT OF THE MACHINE (EXCEPT DIES) IS 62 TON, (136700lb).

E2G 400US

PRODUCTION NO.	3RD ANGLE P.	HEAT TREATMENT	SCALE	1:130
DESIGNER	CHECKER	DATE	SCALE	1:130
APPROVED BY	DATE	SCALE	1:130	SCALE
PRODUCTION NO.	DATE	SCALE	1:130	SCALE

1761305020, (ECL) 088070E020,1



GENERAL TOLERANCE SHALL CONFORM TO MIL (4.0002)

Δ*	Δ*	Δ*	Δ*	Δ*	Δ*	Δ*	Δ*	Δ*	Δ*	Δ*	Δ*
----	----	----	----	----	----	----	----	----	----	----	----

A401-4

E26 400US

3RD ANGLE P.P.

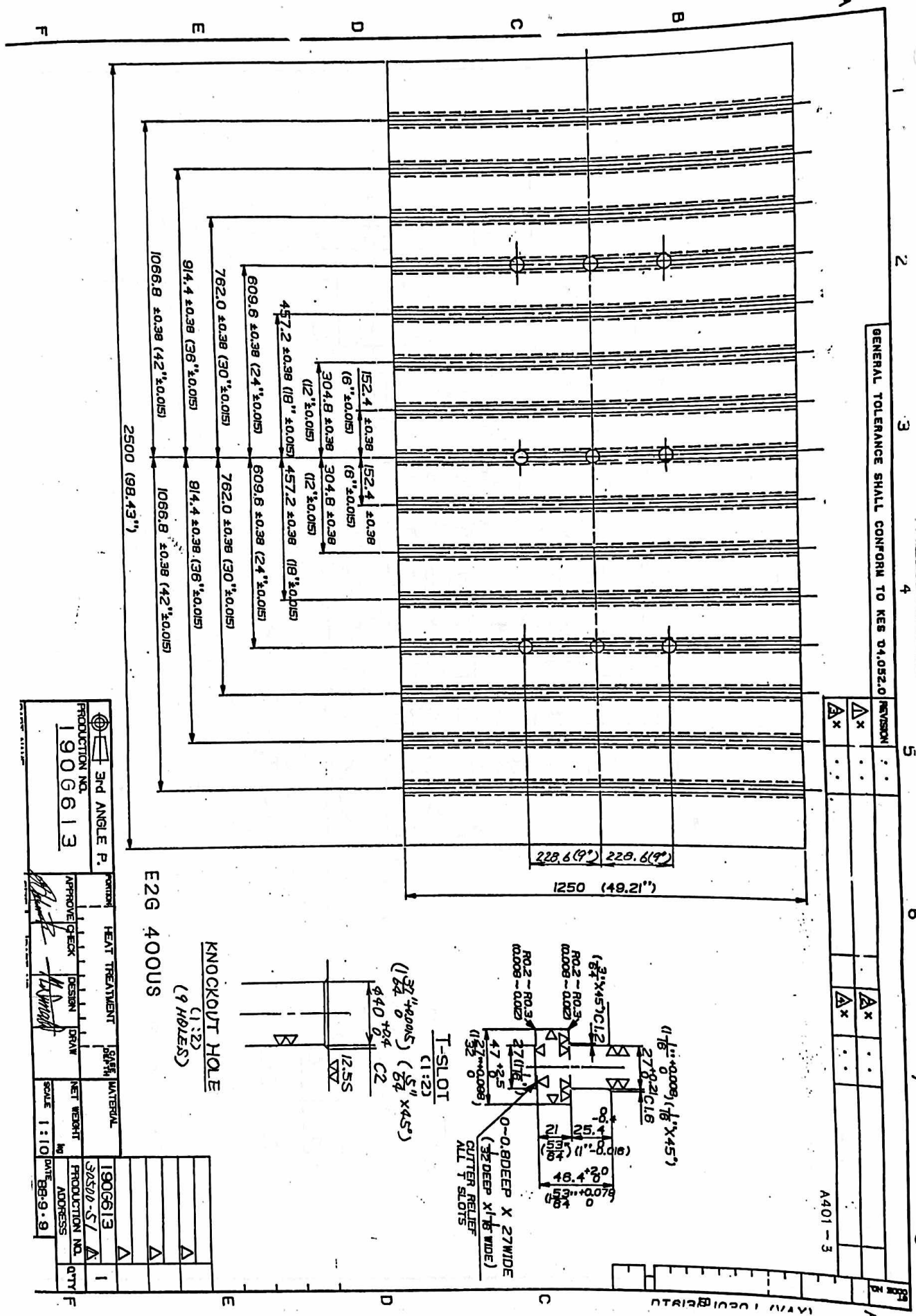
PRODUCTION NO. 1906613

HEAT TREATMENT

PRODUCTION NO. 1906613

SCALE 1:10

88V (KVA) EON 1050J0513D DSEPS018B



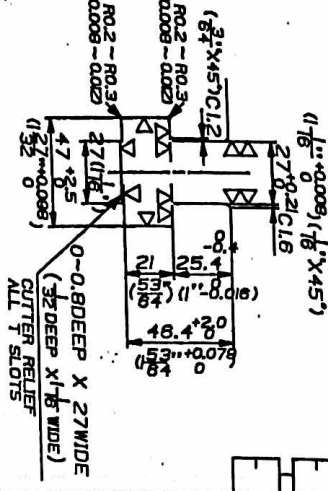
GENERAL TOLERANCE SHALL CONFORM TO KES 01.052.0

REVISION	DATE	BY	APP. BY
Δx	..	..	..
Δx	..	..	..
Δx	..	..	..

**KNOCKOUT HOLE**  
 (1:2)  
 (9 HOLES)

**E2G 400US**

PRODUCTION NO.	1906613	APPROVED CHECK	DESIGN	DRAW	SCALE	1:10
3RD ANGLE P.		HEAT TREATMENT	DATE		NET WEIGHT	
					IN	
					DATE	88-9-9



PRODUCTION NO.	1906613	QTY	1
ADDRESS			