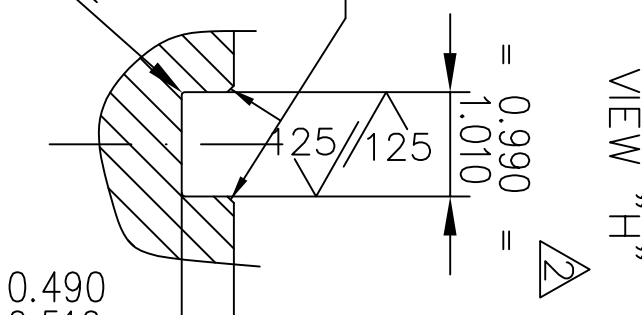
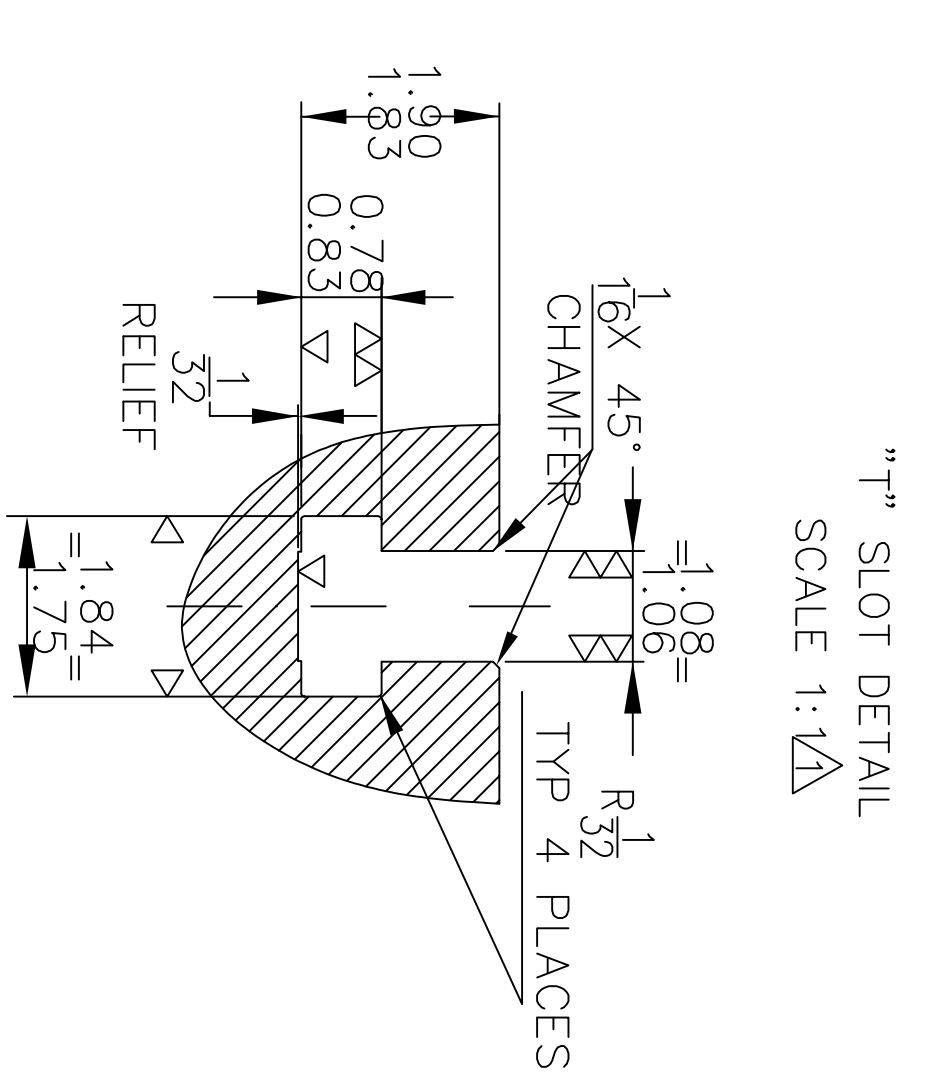
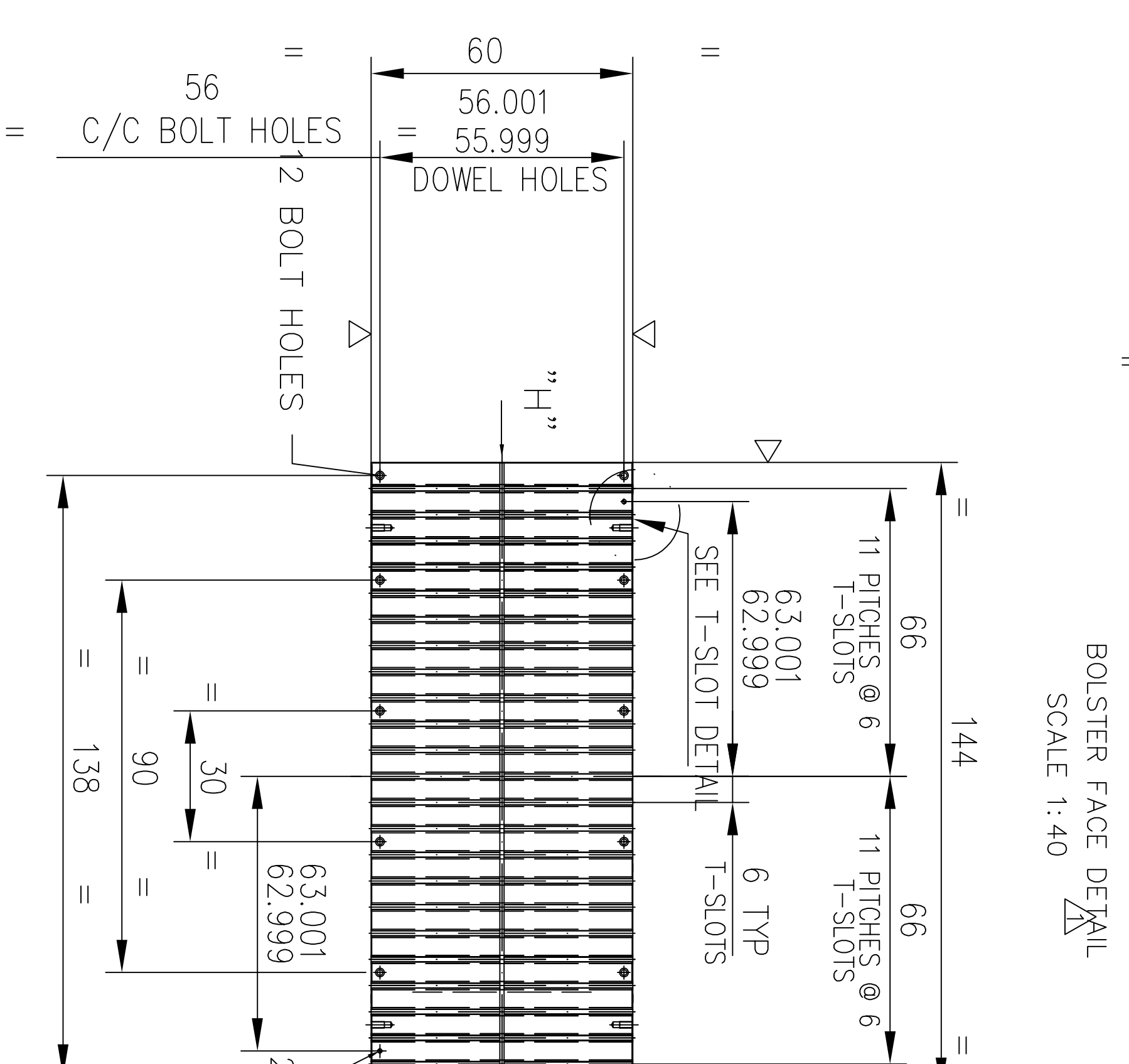
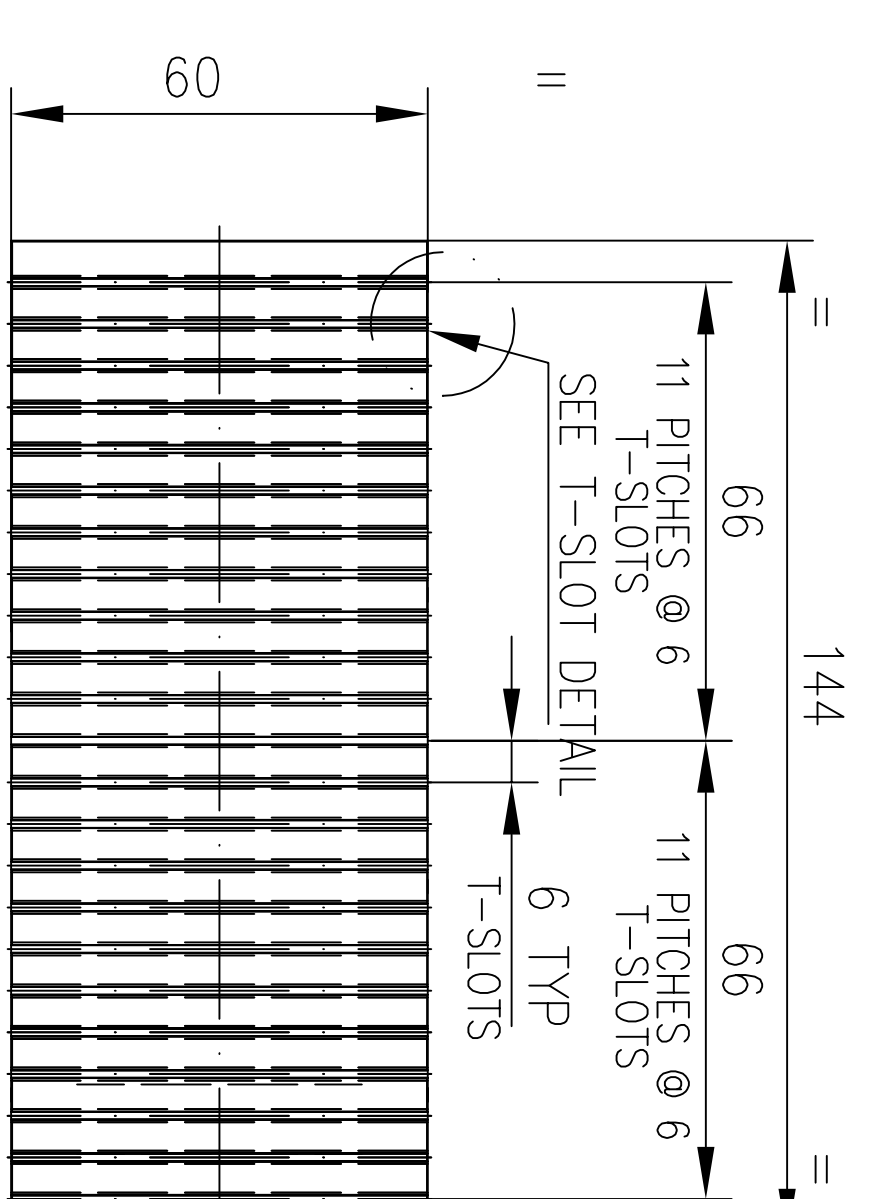
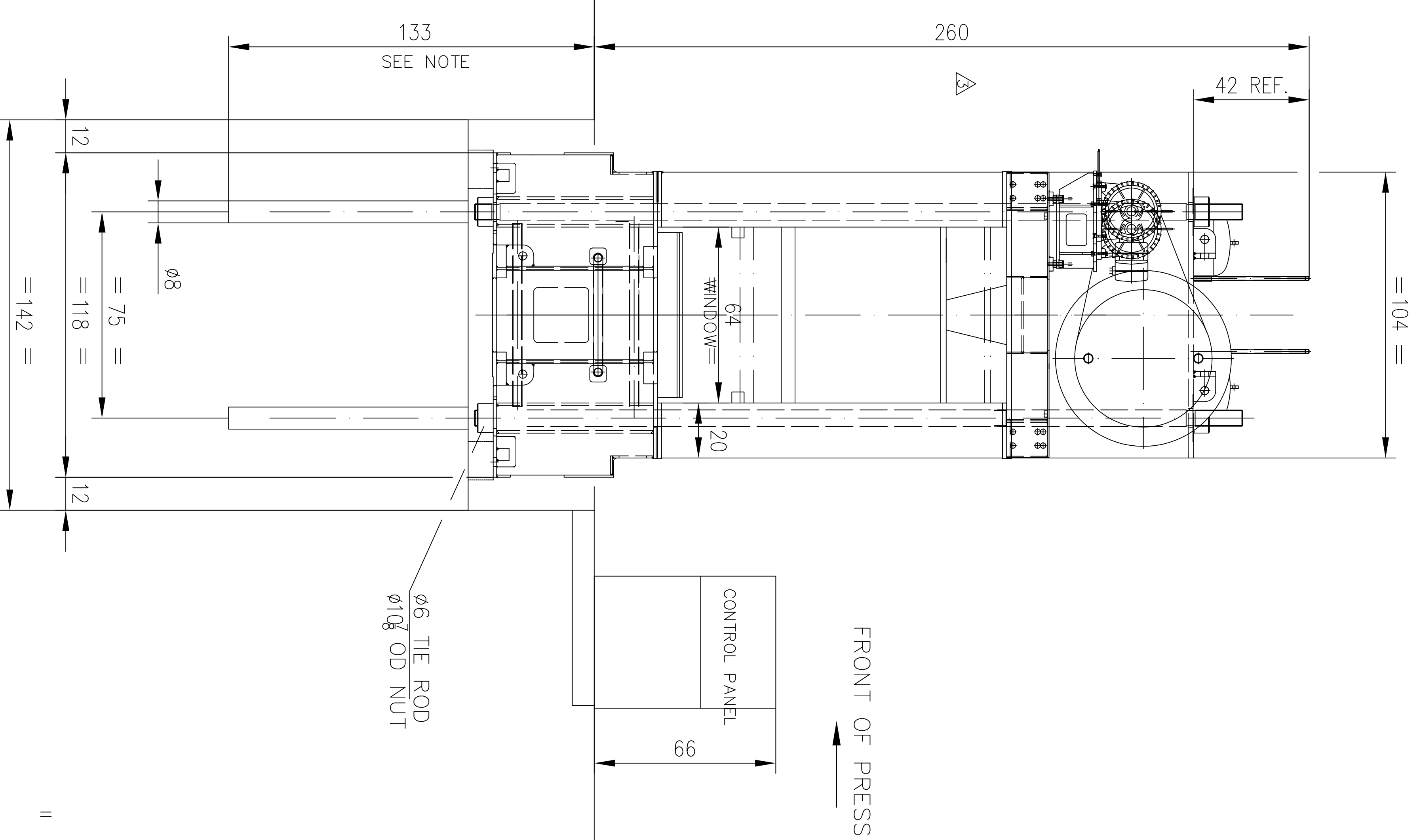
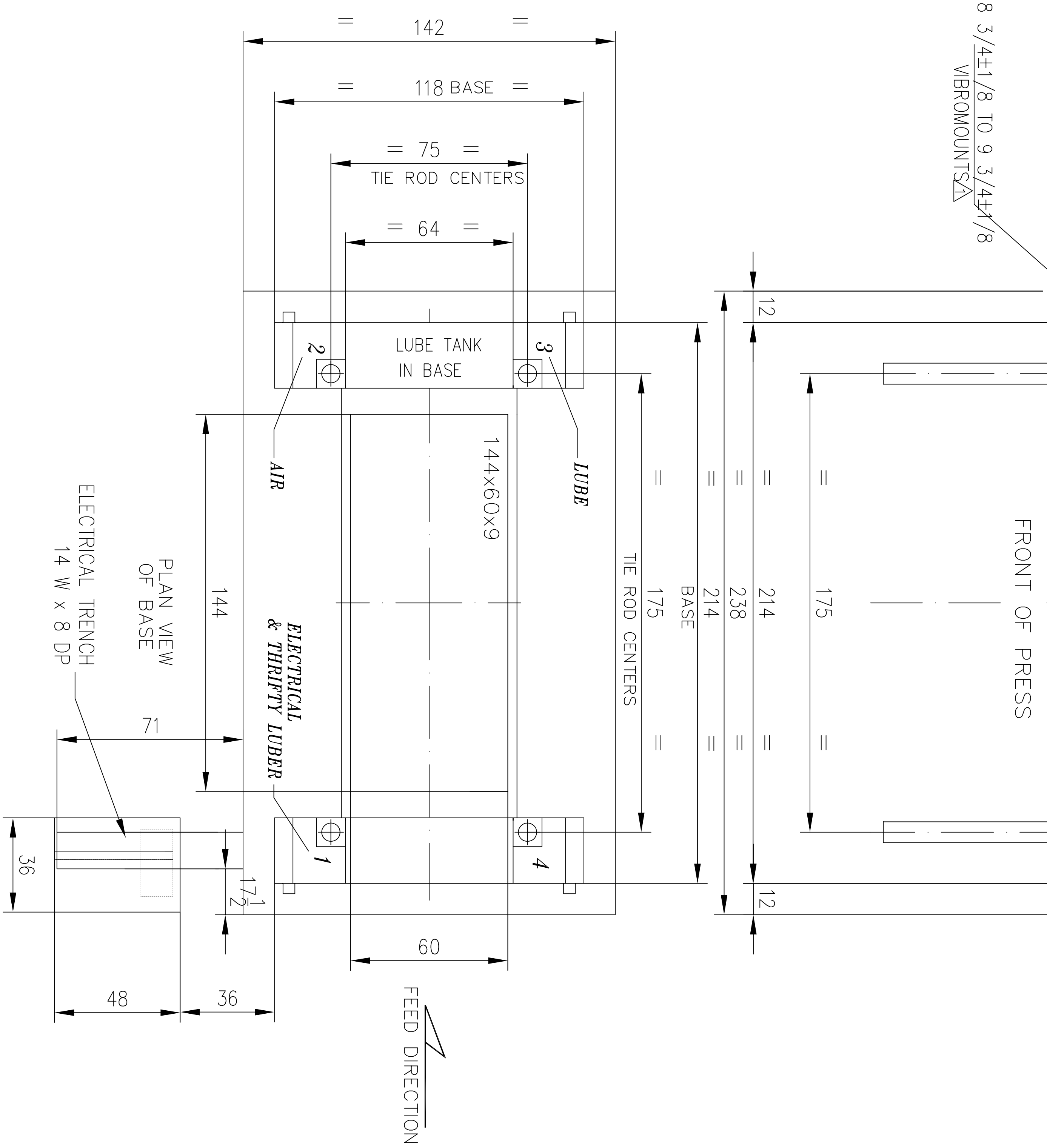
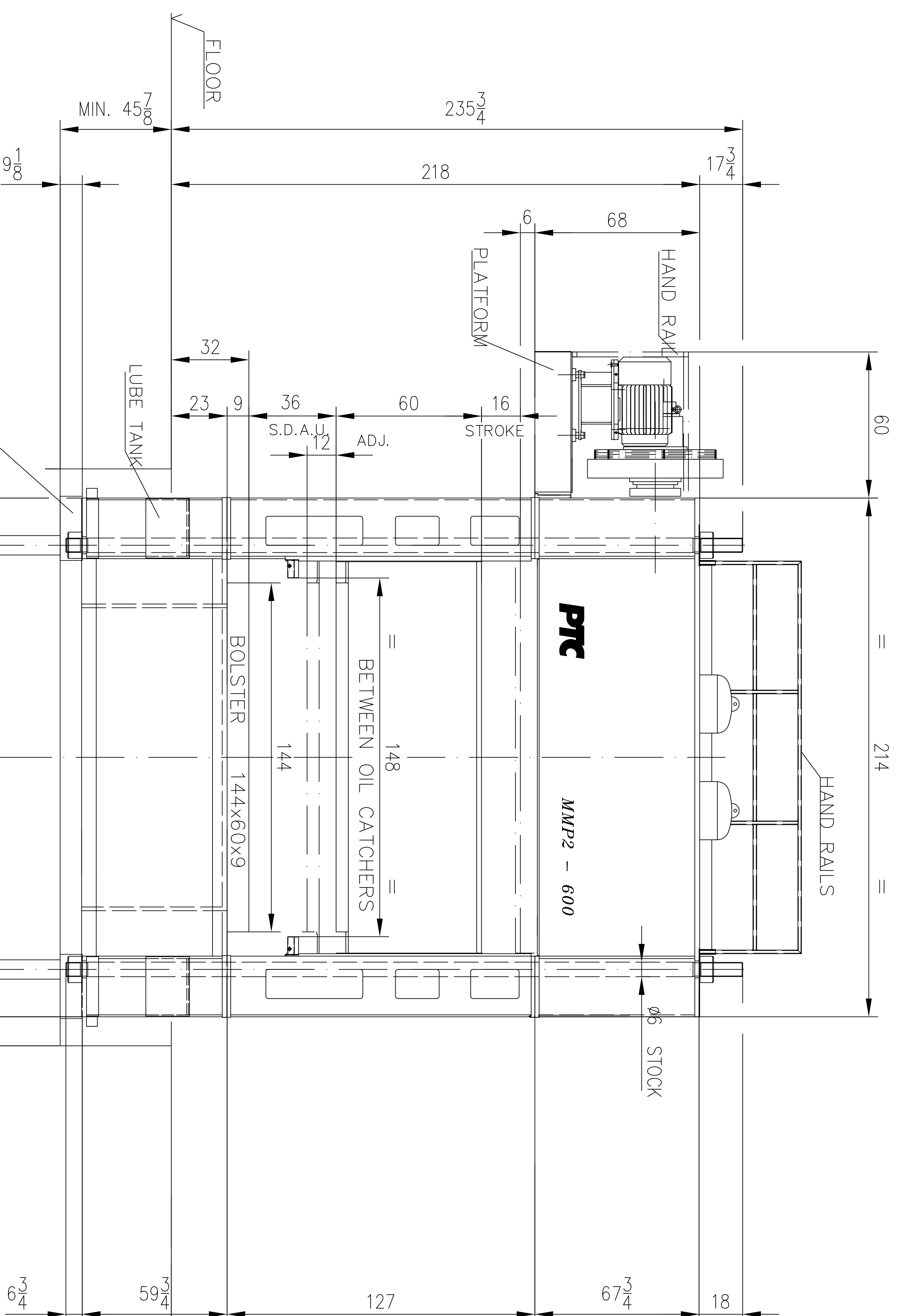


PRESS SPECIFICATIONS	
CAPACITY	600 TONS
RATING POINT	1/2 A.B.D.C.
FULL WORK ENERGY	at 15 SPM
ENERGY AT 15 SPM	82 kiloule
STROKE	16
ADJUSTMENT OF RAM	12
SHUT HEIGHT (SDAU)	36
BOLSTER SIZE	144 x 60 x
RAM FACE AREA	144 x 60
SPEED	15-50 SPM
SINGLE STROKING SPEED	15 SPM
SINGLE HITS PER MINUTE	8
INCH SPEED	8 SPM
OPENING THRU COLUMNS	64
MAIN MOTOR	125 HP



APPROVED  
 APPROVED AS NOTED  
 REVISE & RE-SUBMIT  
 SIGNATURE: \_\_\_\_\_  
 DATE: \_\_\_\_\_  
 NAME: \_\_\_\_\_  
 COMPANY: \_\_\_\_\_  
 (PLEASE PRINT) BROWN CORP.  
 PRESS TECHNOLOGY CORP.  
 CAMBRIDGE, ON CANADA  
**PTC**  
 Signed Print to be returned to PTC within 10 days from:

Company : BROWN CORP.  
**PRESS TECHNOLOGY CORP.**

REV.	DATE	DESCRIPTION	BY	MATERIAL	TONNAGE
3	09/19/00	DODED RAILINGS, REARRANGED AIR DAMPS	SCALE: 1:40	TOLERANCES, UNLESS STATED	DRAWN BY: HAGEL
2	05/04/00	BOLSTER SLOT ADDED, DIM. GEN. RM. SM	DATE: 03/28/00	FRACT: ±1/32", MACH FRACT: ±0.10"	CRD BY:
1	03/28/00	DIMS. BOLSTER, RAM, & T-SLOTS ADDED	LAYOUT CRANK PRESS		600
REV.	DATE	DESCRIPTION	BY	MATERIAL	TONNAGE
D					

\* - DEPTH OF THE ROD HOLES ARE BASED ON LOWERING THE RODS FLUSH WITH TOP OF COLUMN.  
 (NOTE: THIS MAY NOT BE NECESSARY IF ADEQUATE BUILDING HEIGHT EXISTS)